

# Dyson Cancer Centre information session

28 July 2021





## Agenda

- **Welcome message from the Executive team**
- **Designing the Dyson Cancer Centre**  
Dan Barnett, Project Manager and Architect
- **Clinical benefits of the Dyson Cancer Centre**  
Dr Sarah Wexler, Haematologist and Divisional Director
- **Constructing the Dyson Cancer Centre**  
Simon Clark, Senior Project Manager, and Tom Bryan-Smith,  
Design Manager
- **Your questions**

Welcome  
message from  
our Executive  
team





## A message from our Executive team:



*Click on the image above to play the video*

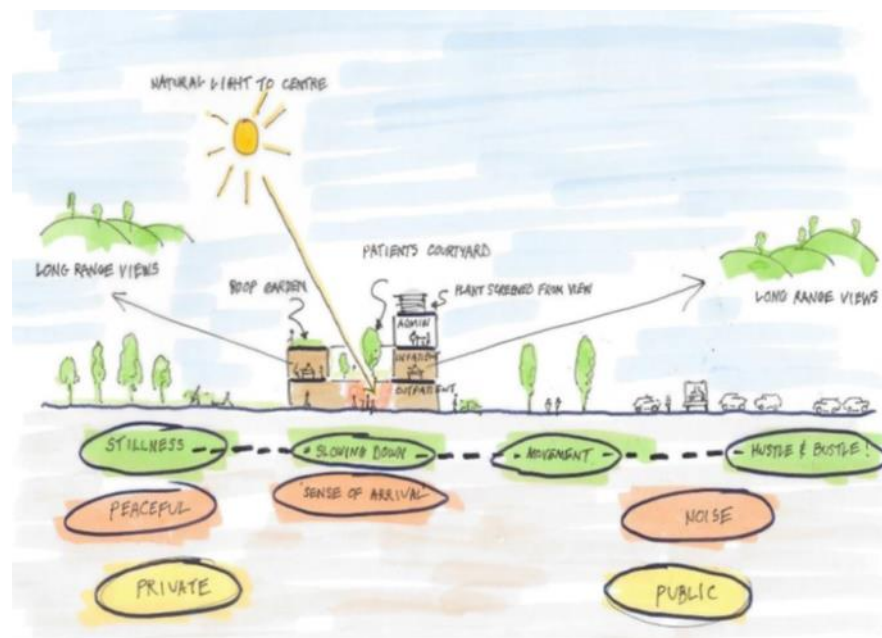
# Designing the Dyson Cancer Centre

**Dan Barnett**  
Project Manager  
and Architect



## Dyson Cancer Centre - Vision

“A new state of the art facility for cancer diagnostics and treatment set within an enhanced greenspace for the campus. The new cancer buildings will house all elements of the cancer pathway under one roof, enabling the provision of holistic care and efficiencies in service pathway design.”



## Dyson Cancer Centre – Key Facts

### Major new healthcare facility

cost: £50 million size 6470sqm GIA over three storeys on a brownfield site.

The Trust are working with Kier Construction, West & Wales Region, which has been procured through the national NHS Framework for major healthcare projects, called Procure 22.

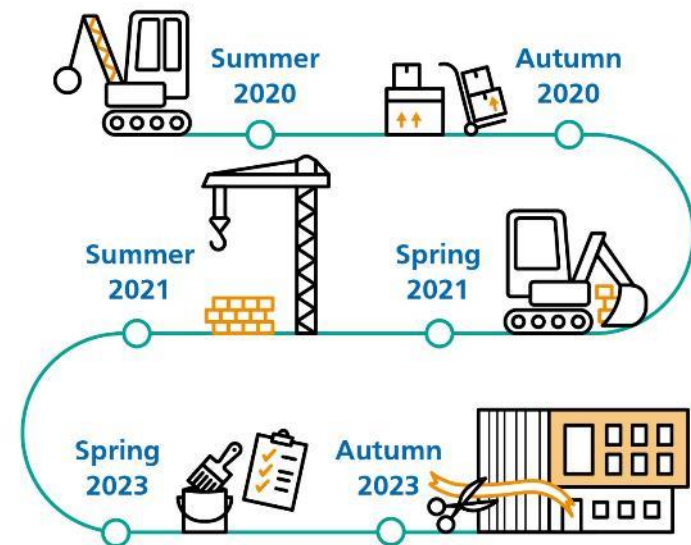
The actual construction is underway and the completion date is scheduled for June 2023 and the building should be fully operational in late October 2023.

The transformation of the Trust estate started with the Estates Strategy in 2010 & adhered to over the years resulting in the following:

- Major new capital investments with the construction of the Dyson NICU, Pathology Labs & Mortuary, Brownsword & RNHRD Therapies Centre, IT Centre & new Pharmacy;
- Outpatient clinics & services relocated into new upgraded facilities created within existing buildings;
- Enabling a large section of Zone A, with buildings that date from 1943, to be demolished to create a brownfield site for the new Dyson Cancer Centre;

# Programme

- Kier construction programme July 2021 to June 2023
- Trust Commissioning Programme June to October 2023, decant of William Budd Ward, Chemotherapy, Radiotherapy CT Sim, Oncology Outpatients & Nuclear Medicine relocated into the new healthcare facility
- Dyson Cancer Centre operational



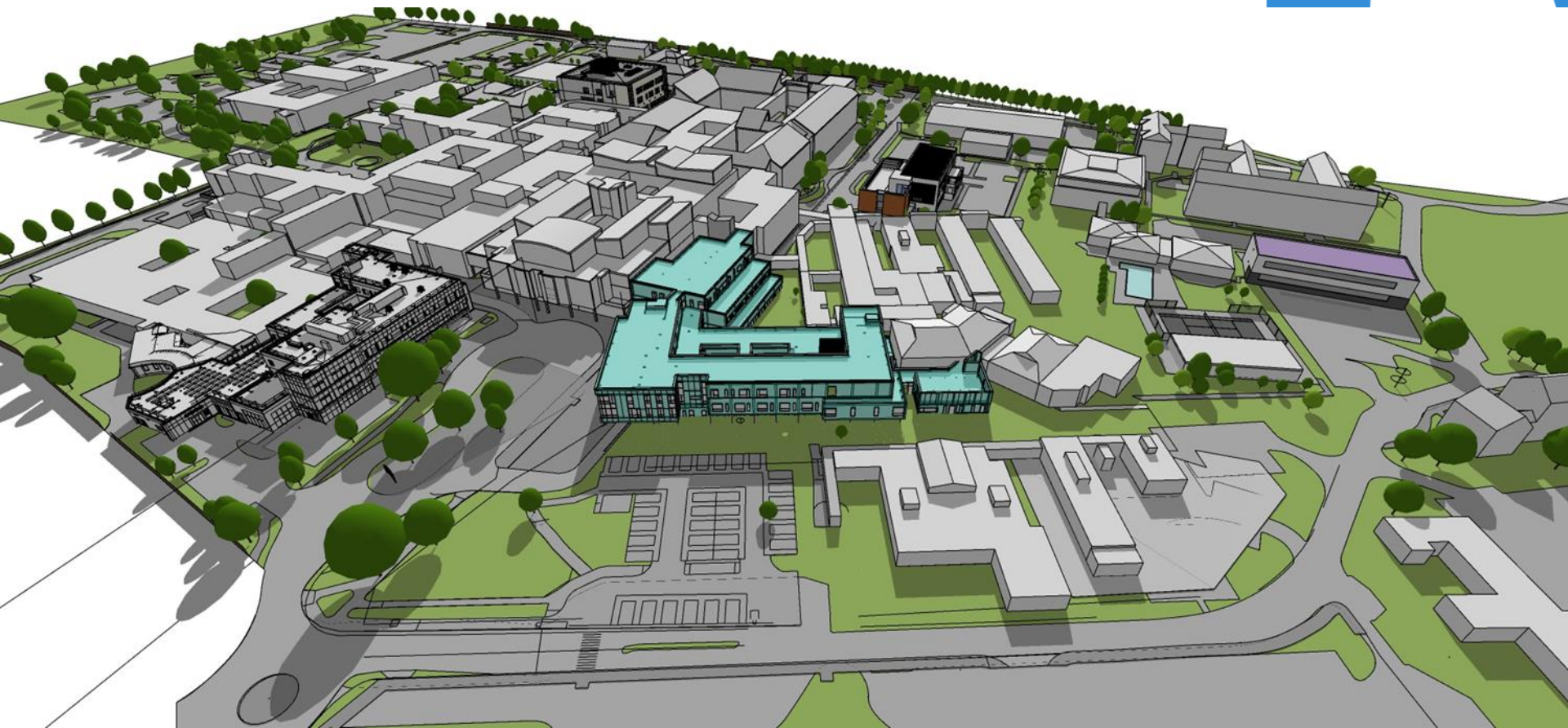
## Demolitions 2019 – 2020



## Construction site 2021 to 2023



## Dyson Cancer Centre – at completion late 2023

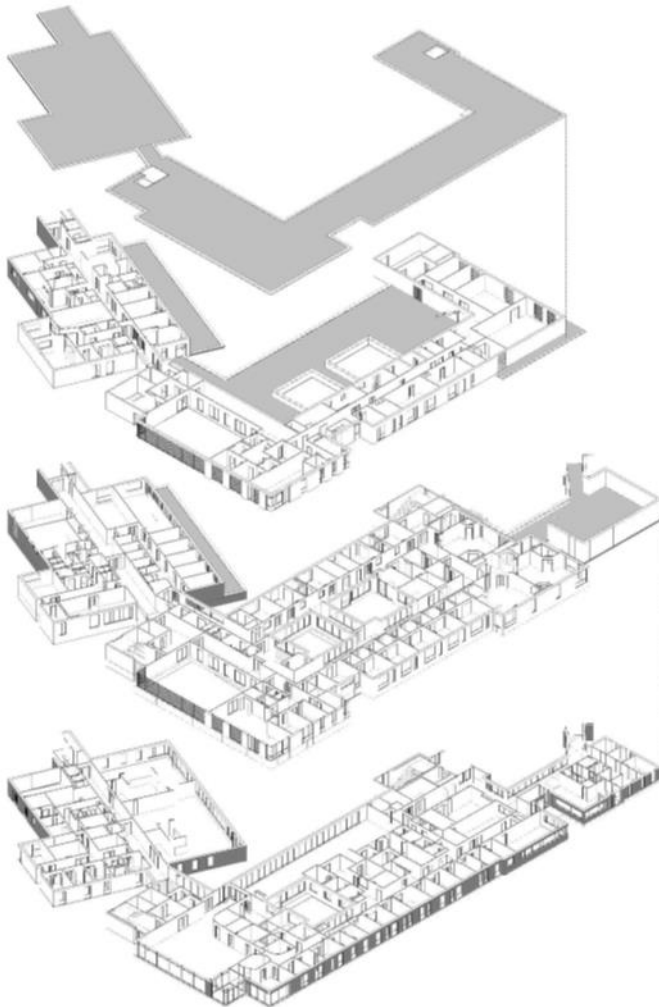


Dyson Cancer Centre – final completion with  
Green Heart & car parking extension in 2027





## The departments - What is inside?



This modern healthcare facility will incorporate the following departments:

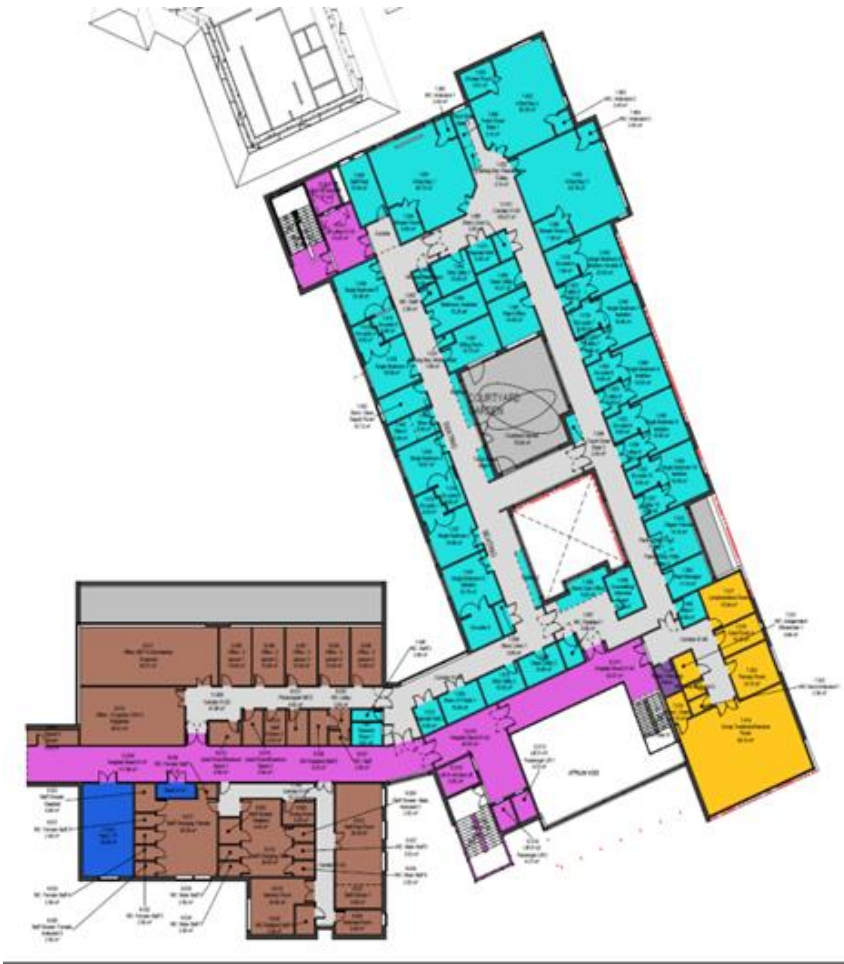
- Chemotherapy
- Oncology OutPatients, includes a Satellite Pharmacy & Clinical Trials
- Radiotherapy
- Acute Inpatients Ward (including five isolation bedrooms)
- Staff Hub/Support Facilities
- Nuclear Medicine
- Medical Physics
- Macmillan Wellbeing Hub

## Ground Floor Plan



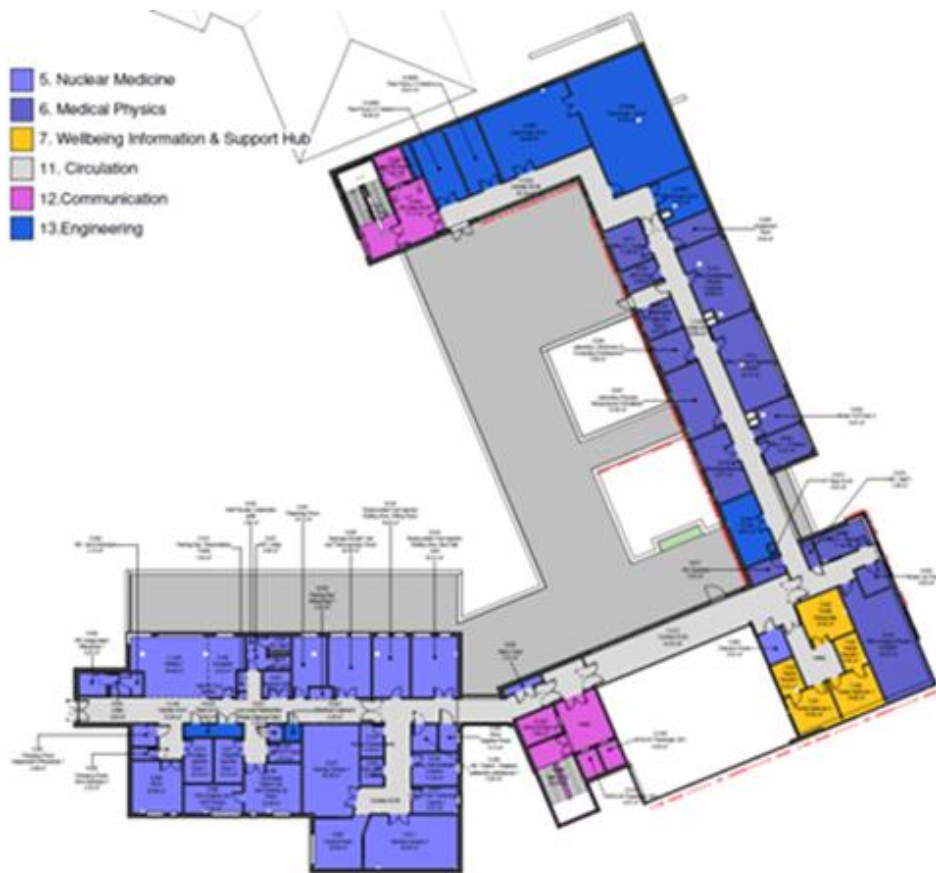
- Chemotherapy
- Oncology Outpatients, includes a Satellite Pharmacy & Clinical Trials
- Radiotherapy
- Macmillan Wellbeing Hub

## First Floor Plan



- Acute Inpatients Ward (including five isolation bedrooms)
- Staff Hub/Support Facilities
- Wellbeing Information and Support Hub

## Second Floor Plan



- Nuclear Medicine
- Medical Physics
- Relatives Accommodation

## Principle Elevation





## Atrium view



# Dyson Cancer Centre with the Green Heart landscape & car-parking at completion 2027



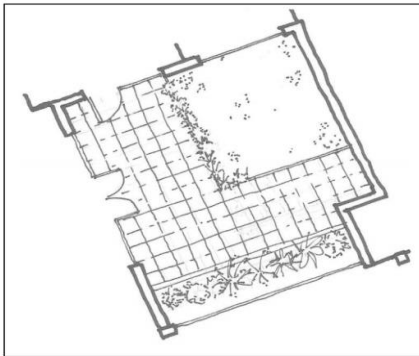


# Courtyards extract Design & Access Statement

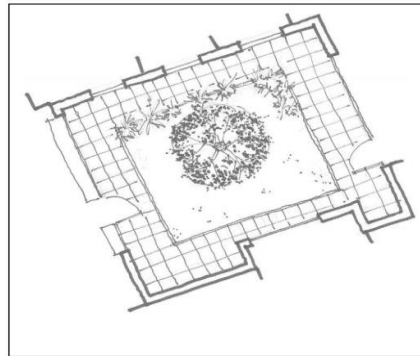
## Courtyards

The inclusion of courtyards is key to the design of the new building both to bring light and views into an otherwise deep plan and to give valuable outside space to the Ward which is sited on the 1<sup>st</sup> floor.

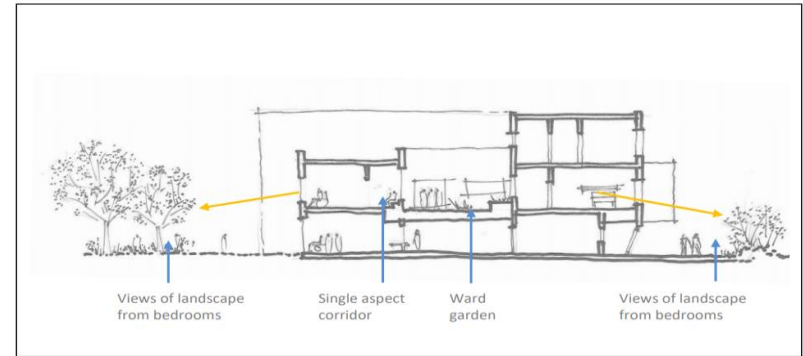
Both courtyards will be fully accessible to wheelchair users.



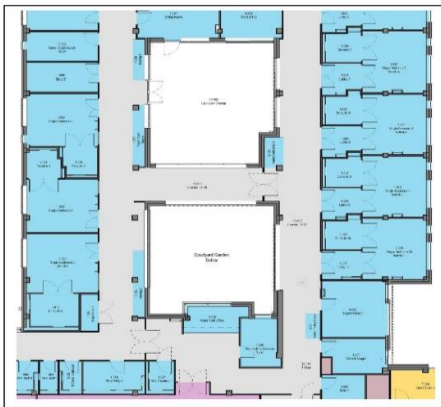
Ward Courtyard Concept Sketch showing paving and planters



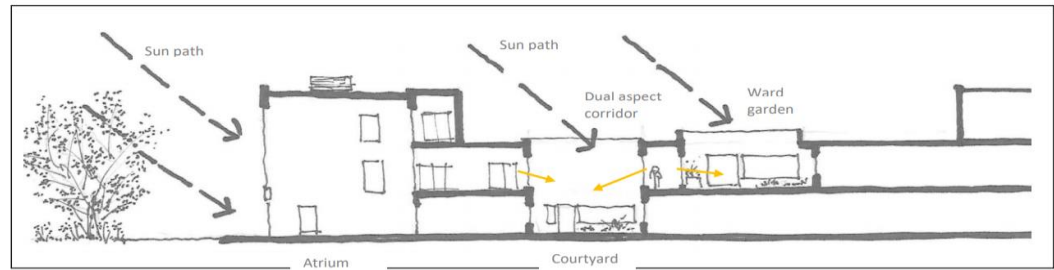
Ground Floor Courtyard Concept Sketch showing paving and soft landscape



Concept sketch section through building showing 1<sup>st</sup> floor ward courtyard



Sketch showing single aspect main Ward circulation with views of the courtyards

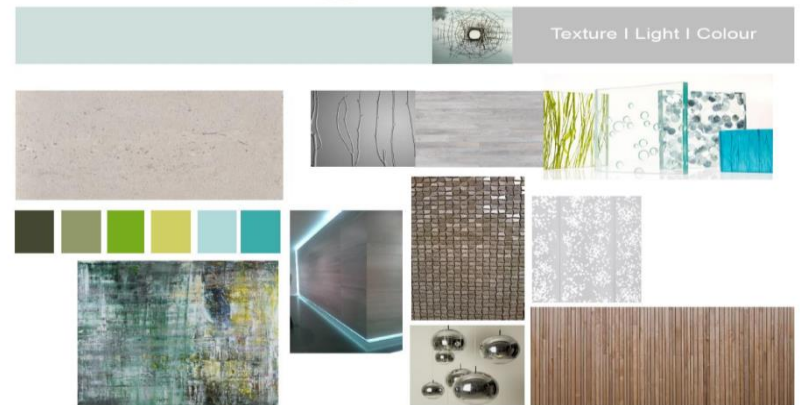
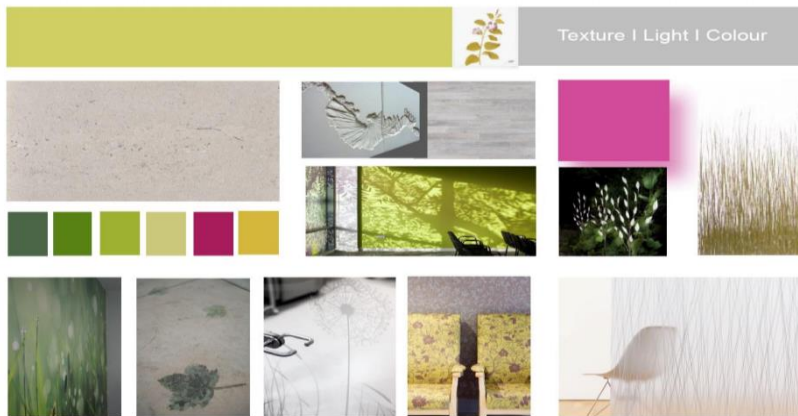


Concept sketch section through building showing 1<sup>st</sup> floor ward and ground floor courtyard gardens

## Ward courtyard



# Interior Design extract Design Access Statement



## Macmillan Wellbeing Hub – library & waiting room



## Oncology Outpatients Waiting Area



# Chemotherapy – Treatment Day Care



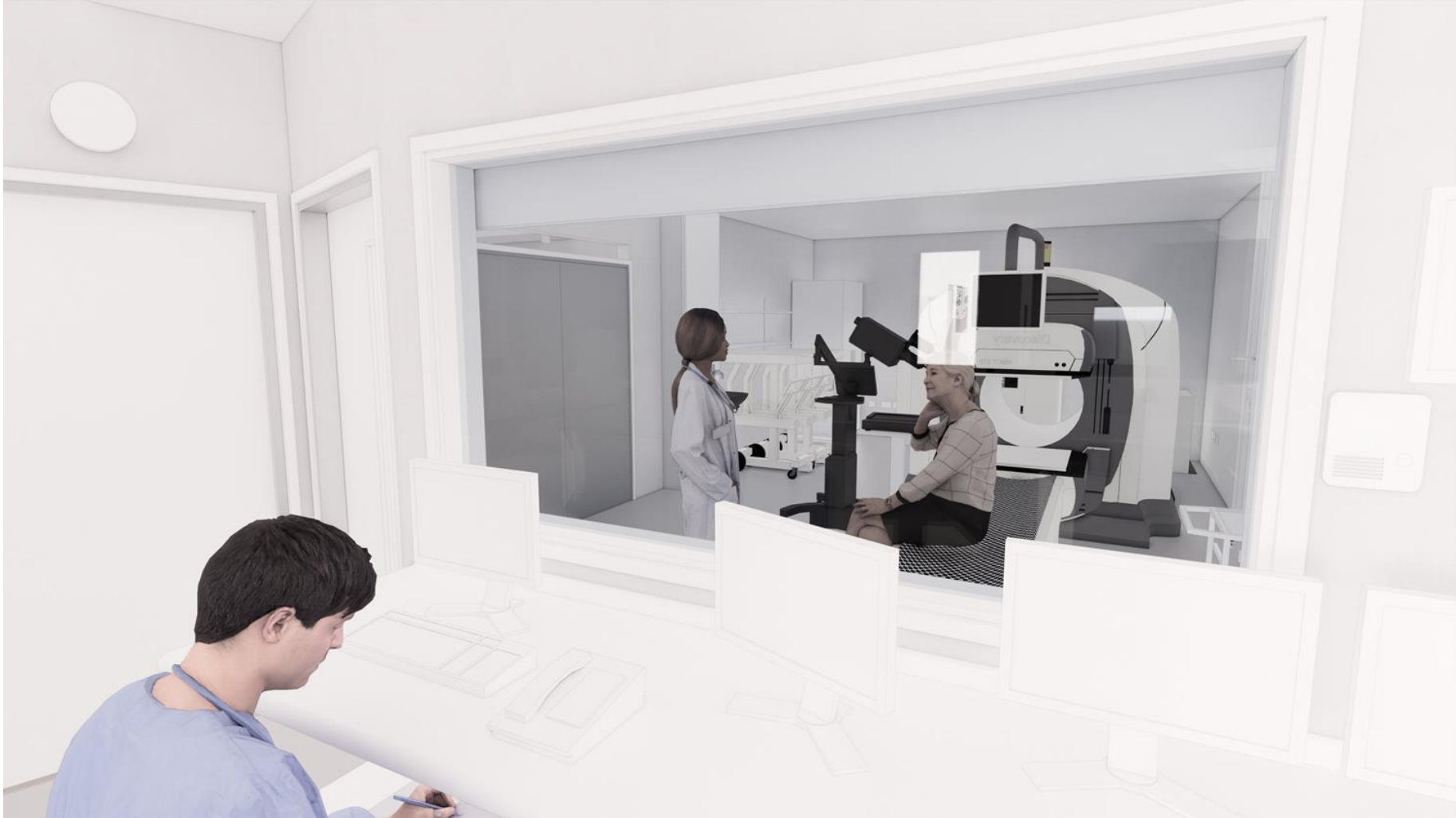
## Inpatient Ward – 4 Bed Bay



## Inpatient Ward – Isolation Bedroom



## Gamma Camera – Control Room





Dyson Cancer Centre – completion 2027 with 137 parking spaces including 24 disabled car parking spaces, existing disabled car park is replaced  
Existing Car Park P1 298 car parking spaces includes 18 disabled car parking spaces,

# Sustainability



# Clinical benefits of the Dyson Cancer Centre

**Dr Sarah Wexler**  
Haematologist and  
Divisional Director



## Our clinical vision for the future of cancer care in the Dyson Cancer Centre at the RUH

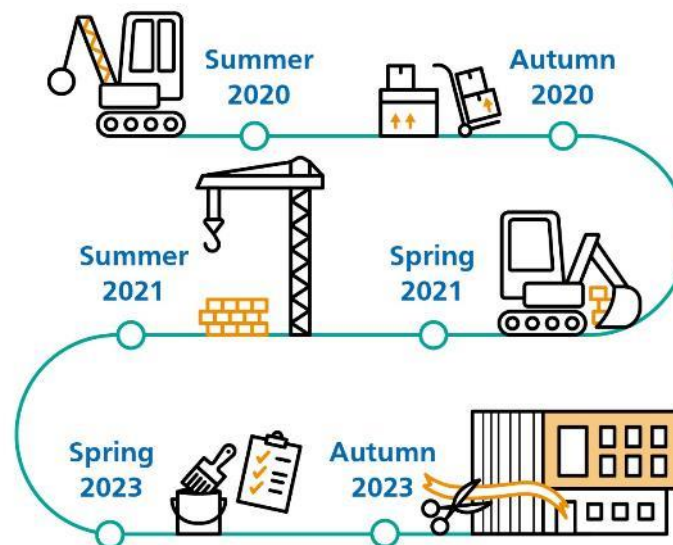
The RUH provides cancer services for a population of approx. 400,000 people, diagnosing 2,200 new cases of cancer each year, making it one of the largest centres in the network.

The new Dyson Cancer Centre will provide:

- A welcoming, calm and healing environment for our patients, carers and families throughout their treatment and recovery
- An energising and stimulating place to work for our staff with space to rest and refresh.
- A venue for research and education, contributing to improving the outcomes for patients with cancer.
- An environment where support services and treatment are co-located to offer wrap-around support 24 hours a day.
- An on-site Macmillan Wellbeing Hub providing information, support and holistic care, with space for education, support groups and respite.

## Incorporated into the Dyson Cancer Centre:

- Outpatient clinic rooms and a calm, light and airy waiting area with views of the gardens.
- A new large chemotherapy and day care unit, designed with patient experience at the centre whilst also providing an effective and well planned working space for staff.
- A modern well designed ward with superb views of the hills around Bath, providing a safe and welcoming environment for patients and families.
- Support and diagnostic services including Medical Physics, Macmillan Wellbeing Hub and a dedicated on site pharmacy.
- A Radiotherapy suite with a separate entrance and waiting area for easy access.
- A dedicated on-site research unit.
- A Staff Hub providing quiet space to work and rest.



# CLINICAL BENEFITS OF THE NEW DYSON CANCER CENTRE



# Constructing the Dyson Cancer Centre

**Simon Clark**  
Senior Project Manager

**Tom Bryan-Smith**  
Design Manager



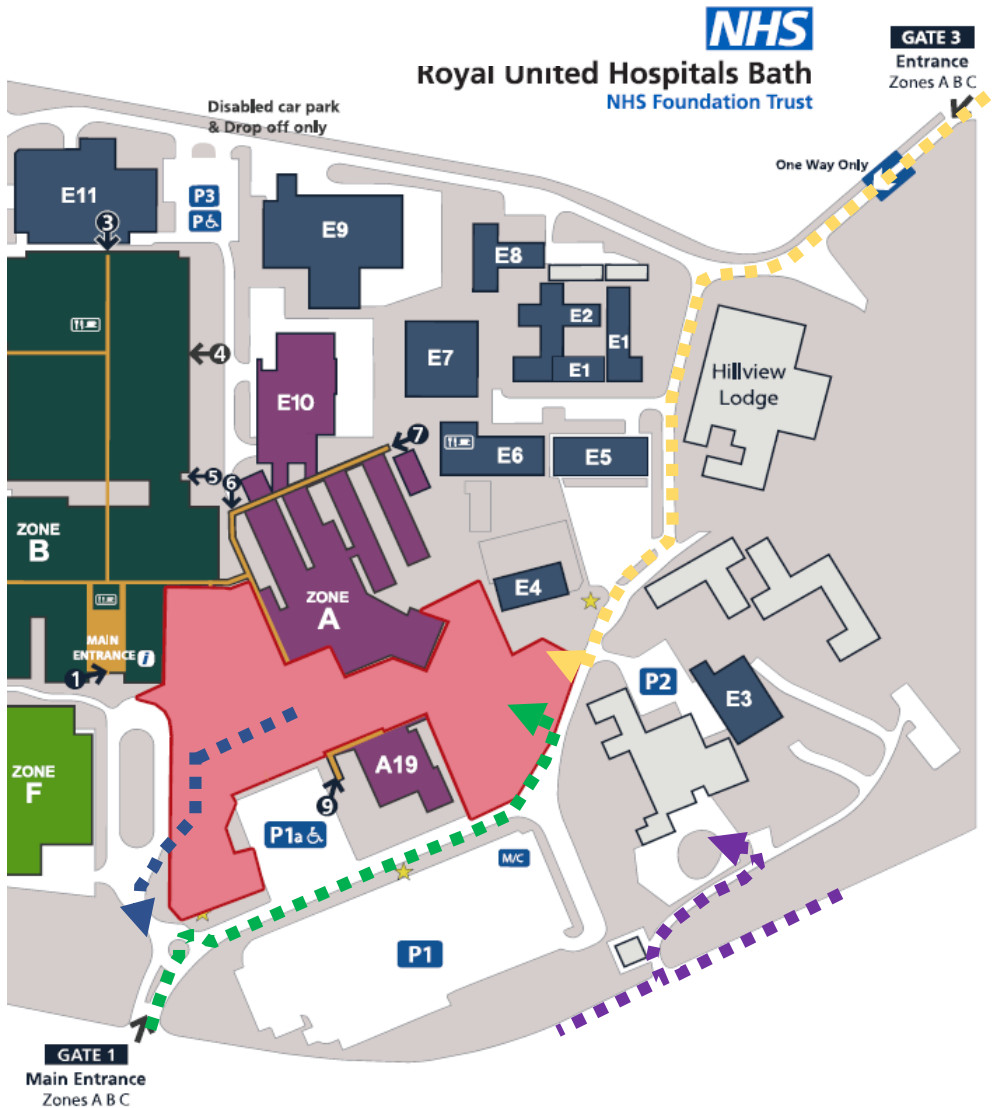
## RUH Dyson Cancer Centre access routes

-  Kier Site Access/Deliveries
-  Kier Site Exit
-  Kier Contractors Parking, Access & Egress
-  Kier Staff Access

**Kier Construction Site Office  
RUH Dyson Cancer Centre  
Combe Park  
Bath  
BA1 3NG**

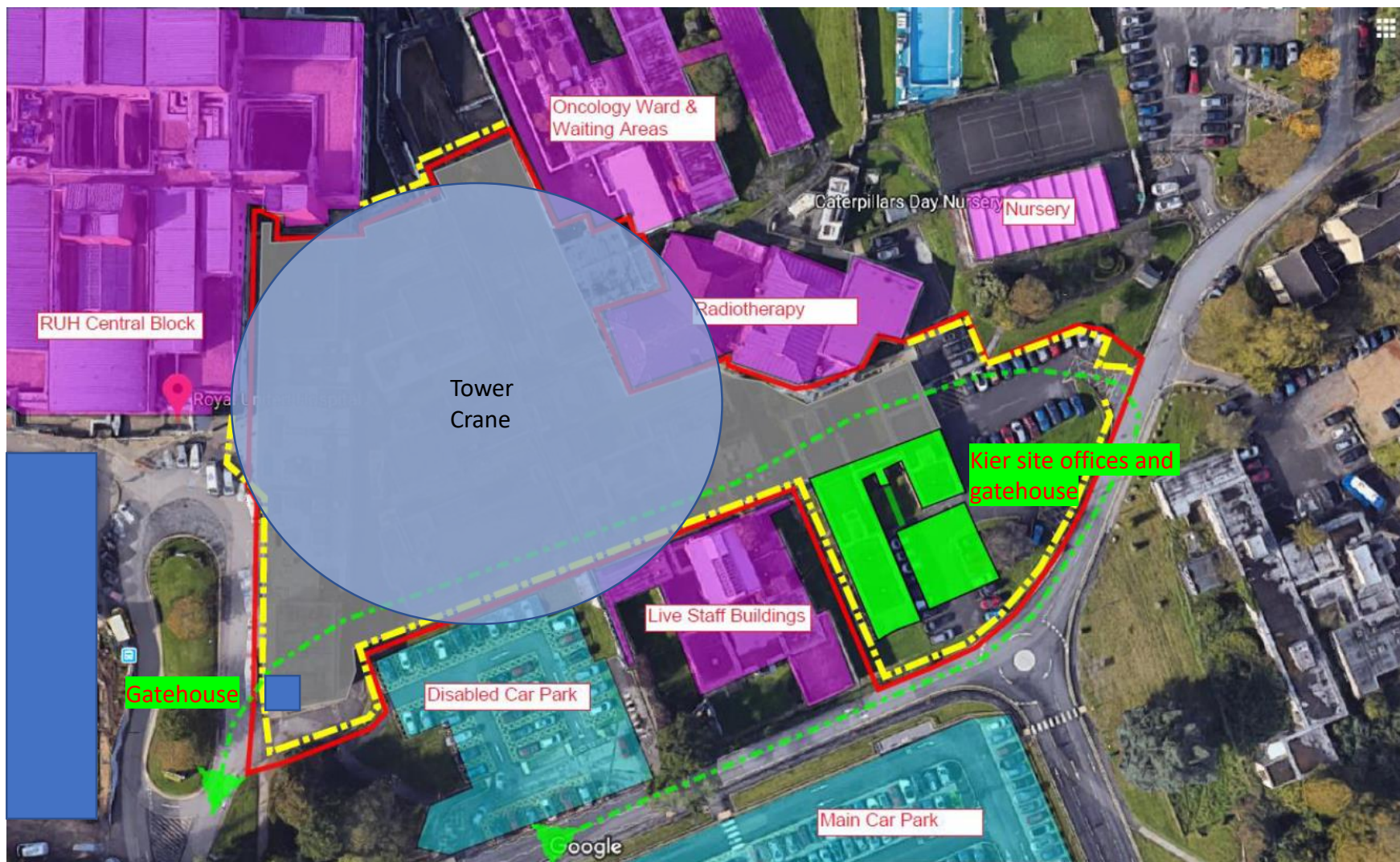


  
Royal United Hospitals Bath  
NHS Foundation Trust

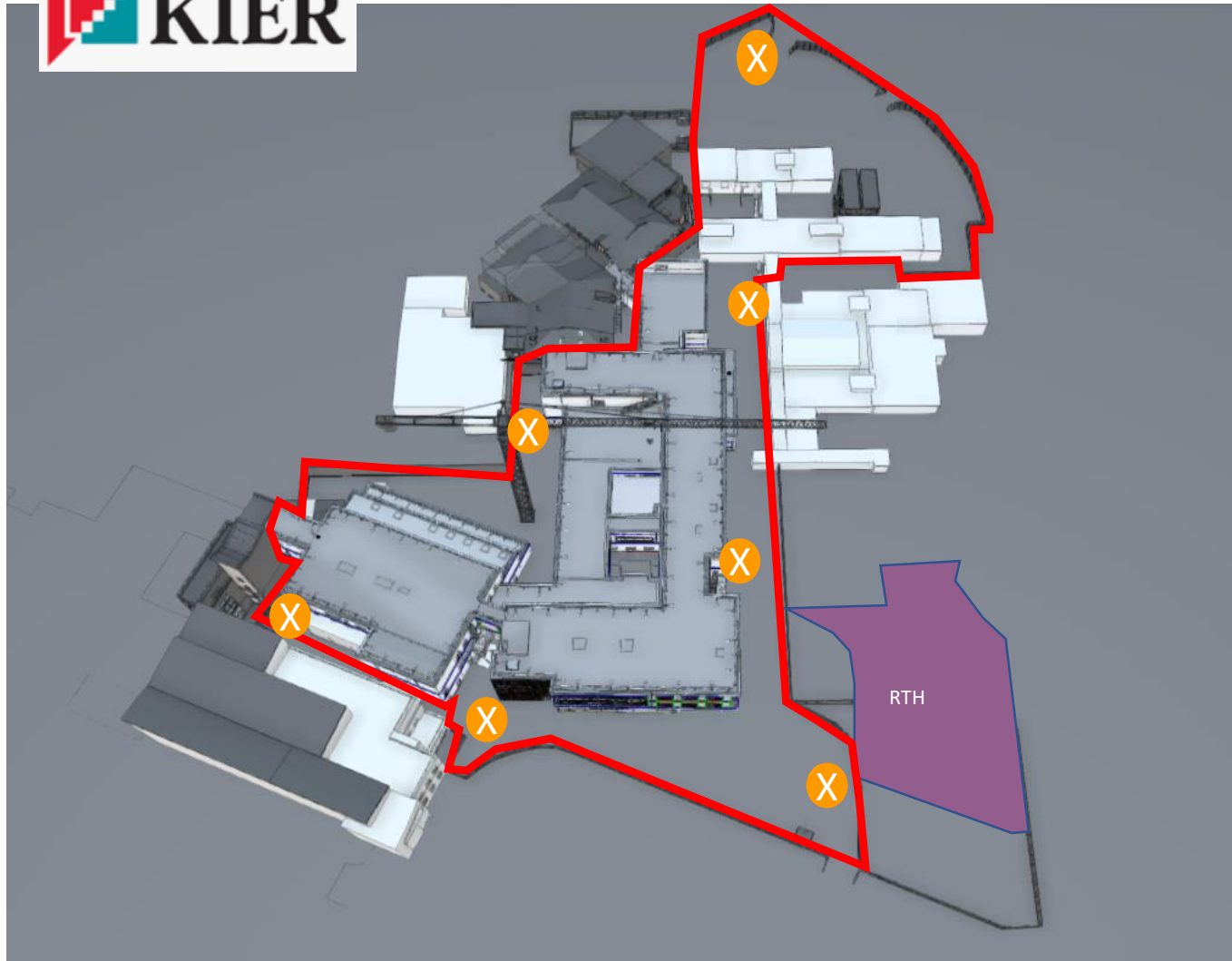




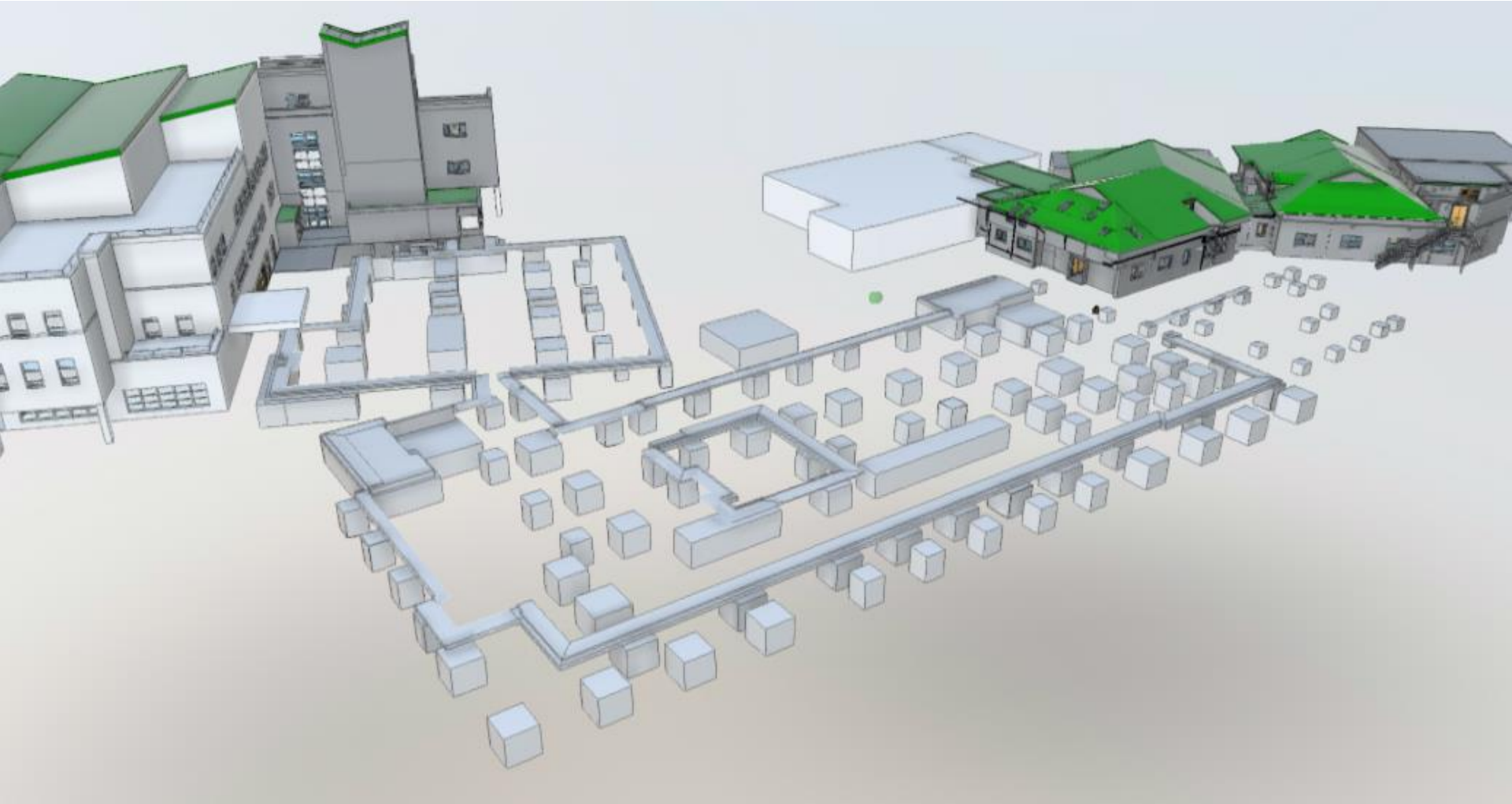
# Site Logistics Plan



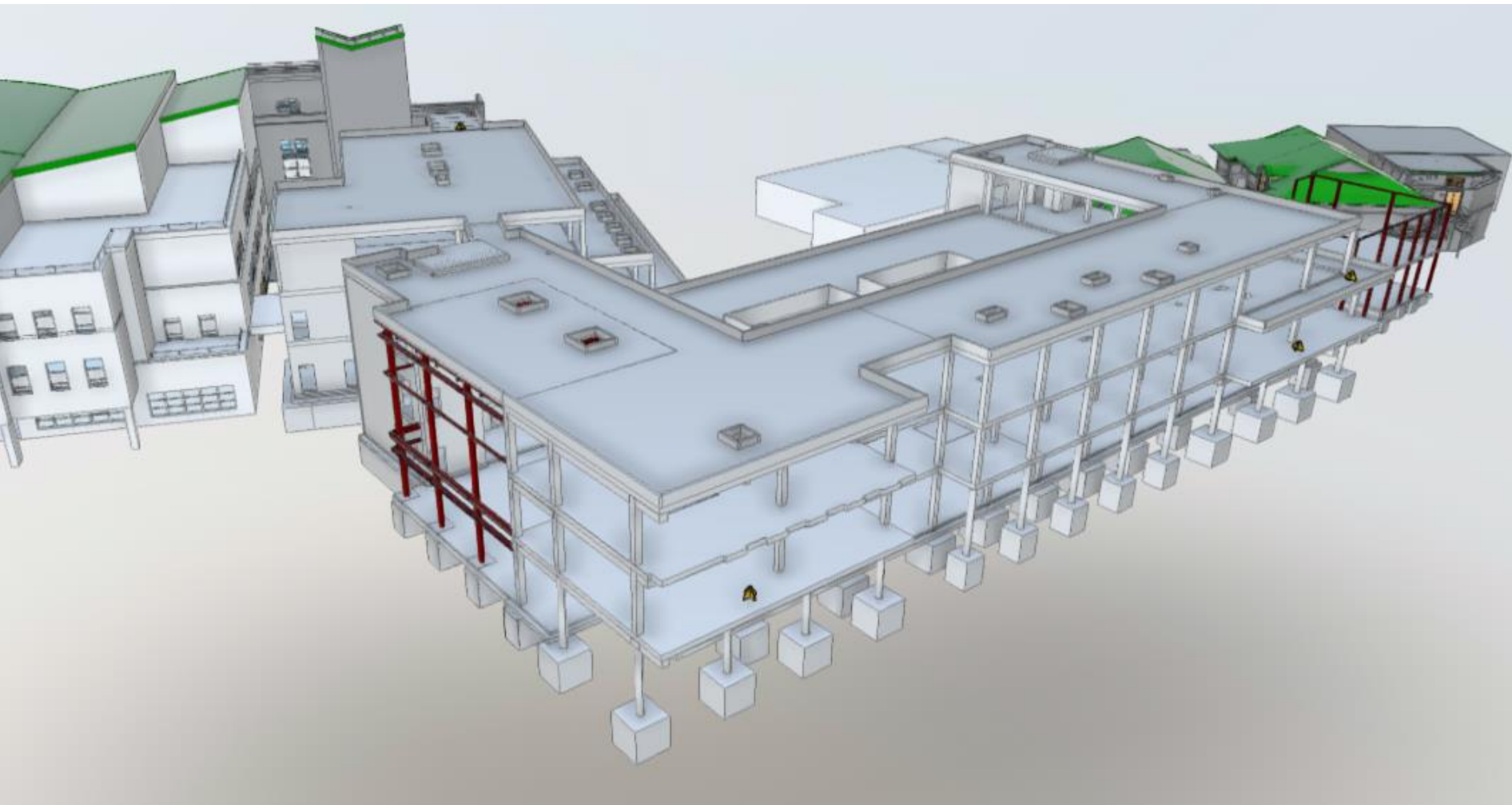
# SITE NOISE MONITORING PLAN



## Groundworks Phase - July to November 2201



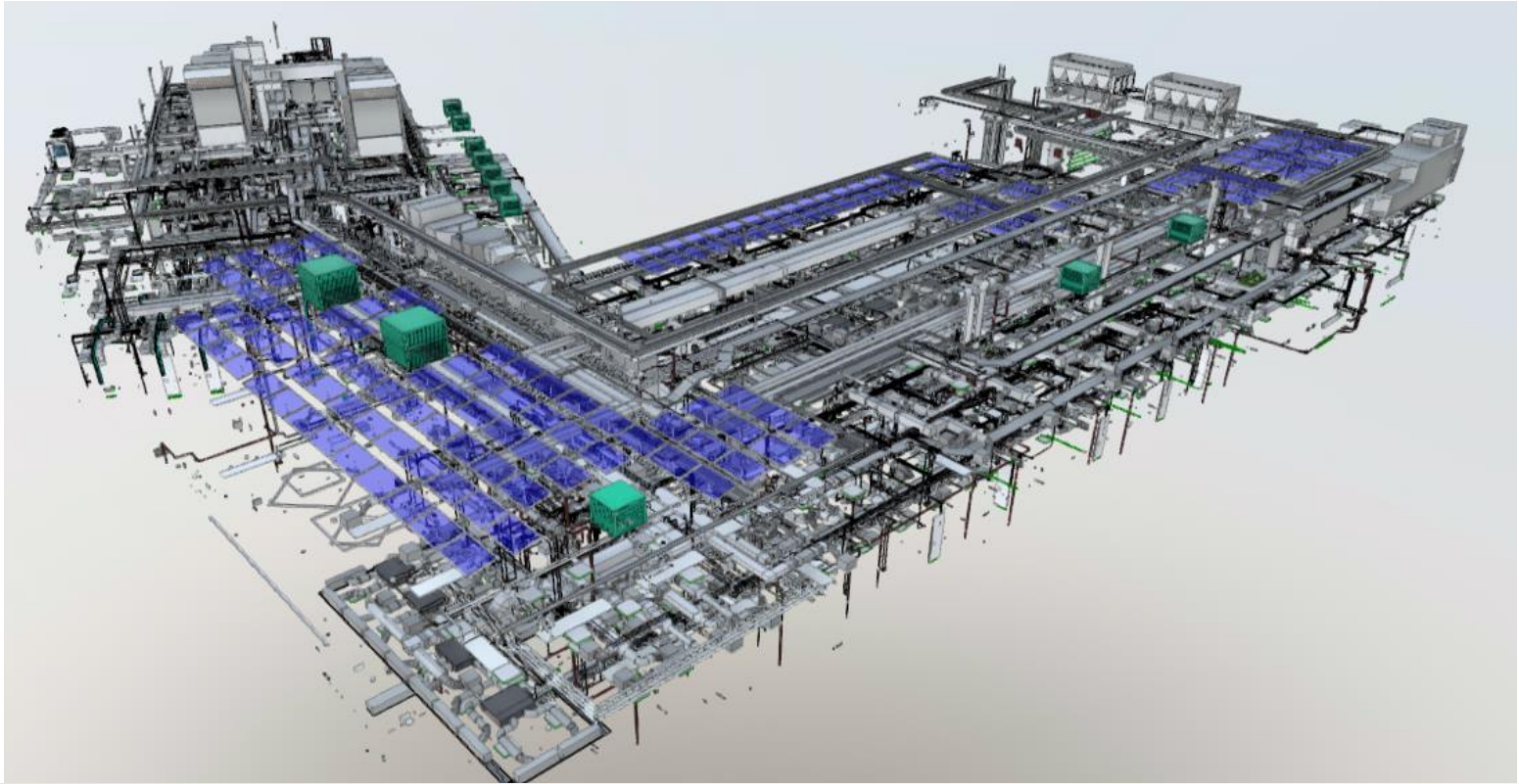
# Structural Frame Phase - November 2021 to March 2022



## Envelope Phase – February 2022 to November 2022



## Fit-out Phase – April 2022 to March 2023





## Closing remarks

- The slides will be available later on our website [www.ruh.nhs.uk/DysonCancerCentre](http://www.ruh.nhs.uk/DysonCancerCentre)
- Contact the team at [ruh-tr.CapitalProjects@nhs.net](mailto:ruh-tr.CapitalProjects@nhs.net)

# Thank you