

Council of Governors

Date:	14 th March 2024
Agenda item:	6
Title:	Research and Development Update
Items:	Enclosed

An Update RUH Research

Recent achievements and
developing a strategy
Council of Governors
March 2024

Jane Carter

Head of Research Development
The RUH, where you matter



A brief introduction to R&D at RUH

- Conduct a wide range of research across more than 20 RUH clinical specialities with 200 individual research studies open or in follow up at any given time.
- Studies range from simple data collection through to multi-arm complex randomised controlled trials.
- All research projects and infrastructure funded externally, with an annual income of circa £4million.
- RUH employs a research team of around 80 staff members
- We have a dedicated research outpatient facility
- Two main “modes of operation” – Development and Delivery

The RUH, where you matter

Evidence for benefit of research

People we care for

Over the last 10 years there are several publications which show the correlation between better outcomes with being treated in a research active hospital.

People we work with

Being able to spend time on research improves retention of staff

People in our community

- Evidence shows the need to integrate the NHS and health research.
- For each patient recruited onto a commercial trial on average NHS providers in England received an estimated £9,200 from life sciences companies, and on average saved an estimated £5,800 per patient (where trial drugs replaced the standard treatment)

The RUH, where you matter

Funding for Research

Its Complex! Sources include:

- NIHR Clinical research network – infrastructure support and delivery staff for NIHR Portfolio research
- National Institute for Health Research grants – range from feasibility to programme grants
- Commercial companies – Pharma and medical device companies provide support to test their products and may also support clinician led research projects through grants
- Research Capability Funding – provided by NIHR to support overheads and development of new grants
- Charities – including local RUHX, Bath Institute for Rheumatic Diseases, Bath Unit for Research in Paediatrics

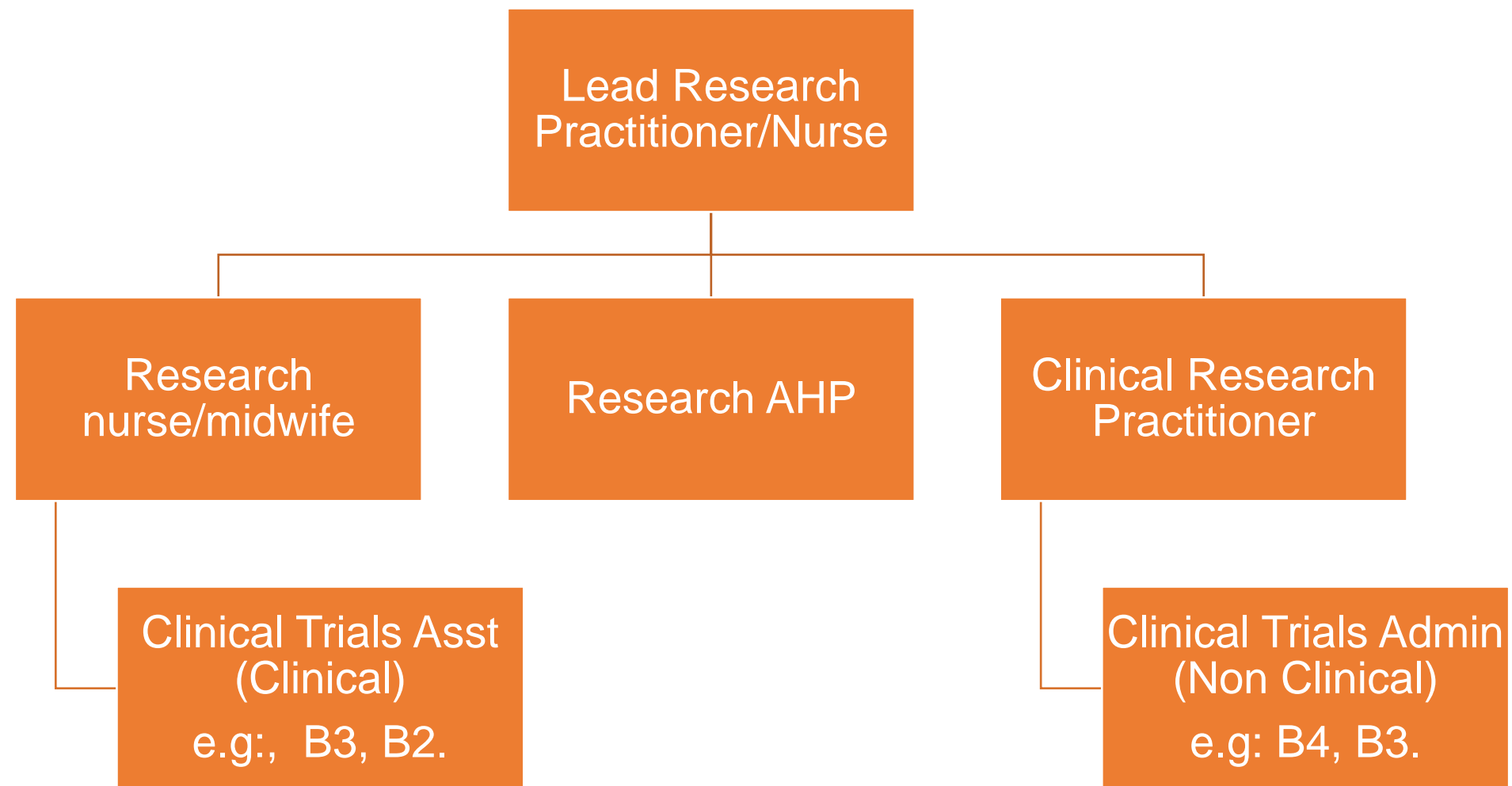


The RUH, where you matter

RUH “delivers” research

- Studies sponsored by other NHS organisations, universities or pharmaceutical companies
- Circa 90% of the RUH research portfolio
- Research Governance Team manage the study set-up and liaison with sponsor, support departments etc
- RUH patients recruited and followed-up by research teams based at RUH
- Often care and treatment wholly provided by the research study team

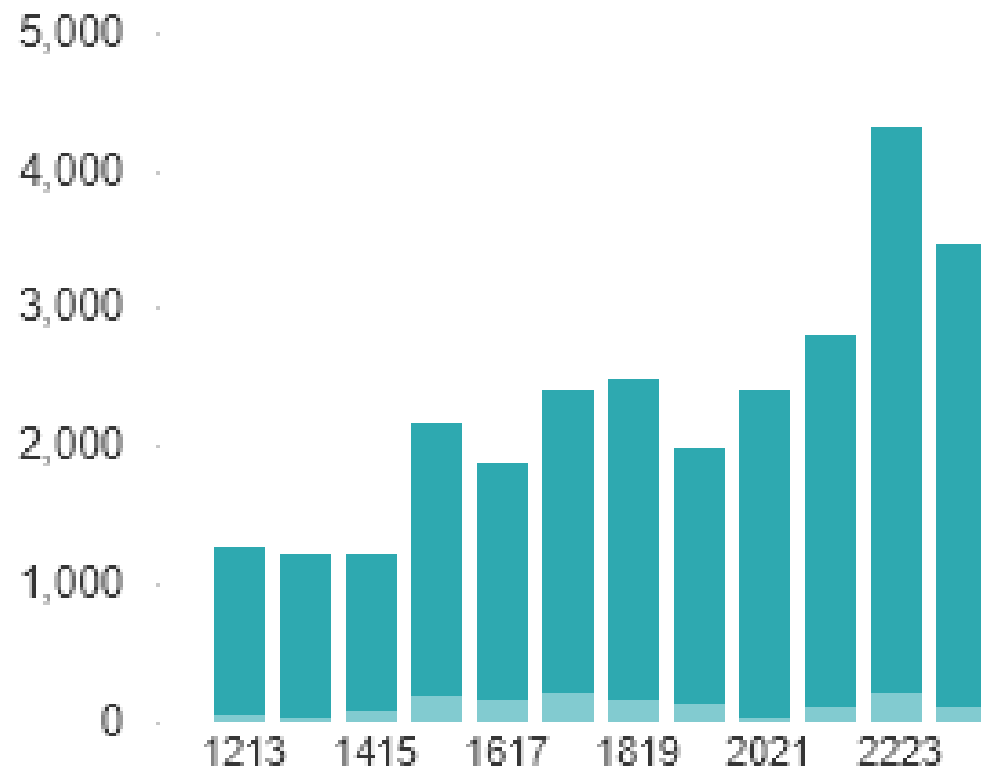
Research Delivery Teams



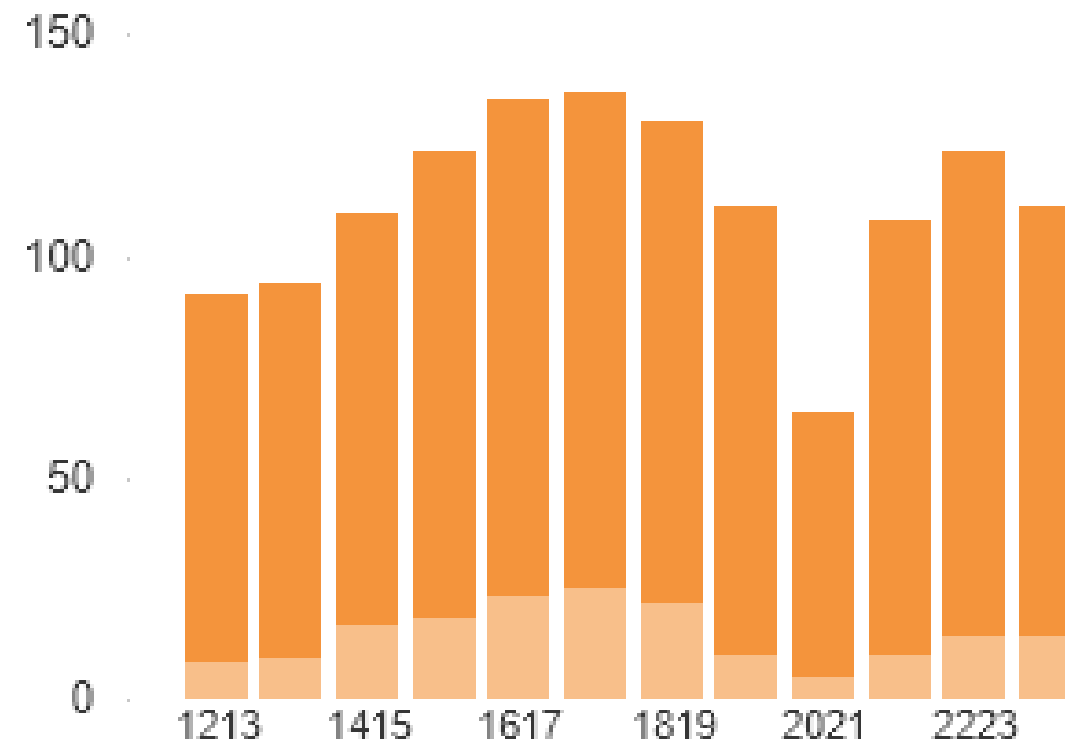
Outcome Measure Database Research

- Many disease areas collect both Clinical and Patient Reported Outcome Measures routinely.
- The Trust has an experienced team who work on maintaining some well established outcomes databases and supporting their use for research by gaining NHS Ethics
- Many publications showing the effect of longitudinal disease progression have emanated from analysis of this data.
- It can be a rich source of income as Pharma access the data to answer their specific research questions.
- In recent years data collection for many has been transformed with electronic data capture via iPads, Patient's mobiles or PC.

Performance



Recruitment of patients to clinical trials/research studies



Number of studies open to recruitment

Commercial research

“Commercial research projects are those that are sponsored and funded by commercial companies.” - NIHR

- Access to new medicines, diagnostic techniques and biomarkers
- Enhanced disease management and improved health outcomes
- Maintaining the UK at forefront of research and attracting/retaining good clinicians
- Experience of and confidence in novel treatments
- Income generation

National context

- The number of industry clinical trials initiated in the UK per year fell by 41% between 2017 and 2021, with cancer trials falling by the same margin.
- The UK has fallen down the global rankings for late-stage clinical research, dropping from 4th to 10th in Phase III trials between 2017 and 2021.
- In 2020/21, the loss of industry research during the pandemic is estimated to have generated an NHS deficit of up to £447 million.
- In 2020, the UK's median time between a clinical trial applying for regulatory approval and that trial delivering its first dose to a participant was 247 days, an increase of 25 days since 2018, which drops the UK to 7th place amongst a basket of comparator countries.

Research Strategic Vision

An organisation where development and delivery of research, and use of evidence, is truly embedded in the provision of outstanding healthcare across the community in collaboration with, and for the benefit of, patients and the public.

To create a culture which embeds research and use of evidence.

- ◆ Demonstrate the positive impact of clinical research in improving patient care, outcomes and clinical practice
- ◆ Create an environment that enables clinical staff to engage with research in a supportive and efficient (straightforward) way
- ◆ To enhance the ability of established areas of research excellence to expand and embed
- ◆ Growth and sustainability of research income
- ◆ Using research to support key Trust strategic priorities
- ◆ Take full advantage of opportunities to use digital and data for research
- ◆ Research as an enabler for environmental sustainability

Research Strategy within people groups

The **people** we care for

To ensure equitable access to research for all patients and integrate research participation seamlessly into patient care

The **people** we work with

Value, develop and create opportunities for our workforce to produce and deliver high quality research

The **people** in our community

Create collaborative partnerships with our community stakeholders

The RUH, where you matter



The **people** we care for

To ensure equitable access to research for all patients and integrate research participation seamlessly into patient care

- ◆ All patients should have the opportunity to participate in research
- ◆ Empowering patients to access research opportunities
- ◆ Provision of time, resources, facilities and equipment to enable research to take place.
- ◆ A streamlined and efficient research set-up and delivery service

The **people** we work with

Value, develop and create opportunities for our workforce to produce and deliver high quality research

- ◆ To attract, develop and support a highly skilled and valued research workforce.
- ◆ Skilled support to develop grant applications, and to navigate regulatory and approval processes for delivery of research (R&D team)
- ◆ To provide opportunities for research and build capacity through research education programmes for all staff groups

The **people** in our community

Create collaborative partnerships with our community stakeholders

- ◆ Create partnerships that will deliver high quality peer-reviewed research to answer questions that serve the needs of our community
- ◆ Be a key partner in the wider research community
- ◆ Enhance Trust reputation as a centre for excellence in research
- ◆ Maximise collaborations based on use of data for research



Royal United Hospitals Bath
NHS Foundation Trust

The RUH, where you matter