

i-STAT TECHNICAL BULLETIN

INSTRUCTIONS FOR UPDATING i-STAT 1 HANDHELD SOFTWARE USING www.pointofcare.abbott

Overview

This Technical Bulletin has been created specifically to guide you through the process of updating the software on your i-STAT 1 Handheld(s). This process should take less than 10 minutes for the first Handheld, and less time for additional Handhelds.

Why Do i-STAT Handhelds Need Software Updates?

The i-STAT 1 System is designed to eliminate operator influence on delivered results.

Due to the continuous manufacturing process improvements to the i-STAT System, it is necessary to update standardization values from time to time to maintain long-term consistency of performance. These updates are equivalent to manually adjusting calibration on a traditional laboratory analyzer.

New CLEW software—delivered twice a year—re-establishes these standardization values and incorporates refinements to the internal quality monitoring system. New JAMS application software allows the i-STAT 1 Handheld to recognize any newly launched cartridge types and to perform any newly launched features.

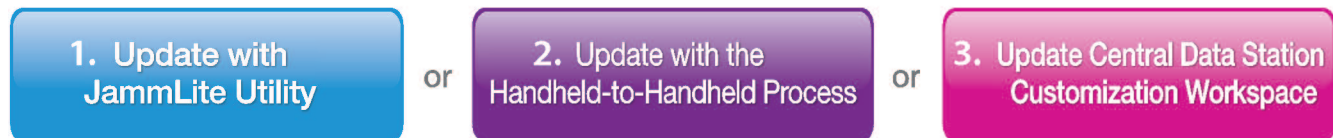
JammLite Process Overview

Whether updating one, two, or many i-STAT 1 Handheld(s), the JammLite procedure must be used to update the first i-STAT 1 Handheld. This process is noted in the diagram below.



Optional Steps

Once the first i-STAT 1 Handheld has been updated using the JammLite Utility, additional i-STAT 1 Handhelds may be updated the same way or by using the Handheld-to-Handheld method. Additionally, if using Central Data Station (CDS), the new software must be added to the CDS Customization Workspace.



Choosing the Best i-STAT 1 Handheld Update Method

JammLite

Always update the first i-STAT 1 Handheld using the JammLite method. It's best to update all Handhelds via JammLite if they are readily available and near the PC you will use to run JammLite.

Handheld-to-Handheld

The Handheld-to-Handheld method is a good choice after the first Handheld has been updated via JammLite and other Handhelds that need updating are not near the PC that was used to run the JammLite Utility.

CDS


Users of i-STAT Central Data Station who would like to update i-STAT 1 Handhelds via the data management software, please consult "Network Options for Updating the i-STAT 1 Handheld using www.pointofcare.abbott" (i-STAT Technical Bulletin 731336-XX).

Instructions for Using This Technical Bulletin


Color-Coded Sections

This bulletin contains color-coded sections to easily identify the steps associated with the different methods for updating i-STAT 1 Handhelds and updating the Central Data Station Customization Workspace.

Color-Coded, Numbered Steps

As stated above, there are several options for updating i-STAT 1 Handhelds. The color-coded, numbered steps help guide the user through a selected update process, as well as provide direction within the bulletin should the user encounter a technical issue, or need to repeat a step. For example,  indicates section 2 (Handheld-to-Handheld update method).

Tips for Troubleshooting

Troubleshooting tips are incorporated throughout the technical bulletin where needed. These tips are identified by the  icon, and appear on the right side of the page.

1. Update with JammLite Utility

Update with the Handheld-to-Handheld Process

Update Central Data Station Customization Workspace

Follow these steps to update with the JammLite Utility

Gathering Equipment for JammLite

i-STAT 1 JammLite Utility

1.1

Before starting the process make sure all the required equipment is available:

- Computer with:
 - Windows 2000, Windows XP or Windows 7
 - A 9-pin serial port or USB port (if using a DRC-300)
 - Access to:
<http://www.pointofcare.abbott/int/en/offerings/support/i-stat/istat-system-software-update>
- i-STAT System Equipment:
 - (1) Serial Downloader/ Recharger (DRS-300) or DRC-300
or
 - (2) Serial Downloader (DS-300)
 - (3) Downloader power supply
 - (4) i-STAT 1 Handheld
 - (5) 9-Pin null modem serial cable supplied with the DS-300 or DRS-300 downloader
 - (6) USB cable supplied with the DRC-300
 - (7) Electronic Simulator



When using a DS-300 or DRS-300, a computer with a traditional 9-pin serial port is required. If the computer does not have one, follow your internal technical support procedure (i.e., contact the IT Department or the individual in your office responsible for computer support). Indicate that the i-STAT 1 software update process requires:

- a 9-pin serial port

Need technical support?
Call your Support Services representative.



1.2 Ensure your i-STAT 1 Handheld has enough battery power (7.5 volts or higher).

To do this:

- Press the **On/Off** (ⓘ) key
- Press the **MENU** key
- Press **1** for Analyzer Status
- Confirm the battery voltage

⚠ If you have rechargeable batteries, charge your Handheld until it has at least 7.5 volts.



Rechargeable Batteries

⚠ If you have disposable batteries, replace with fresh ones.



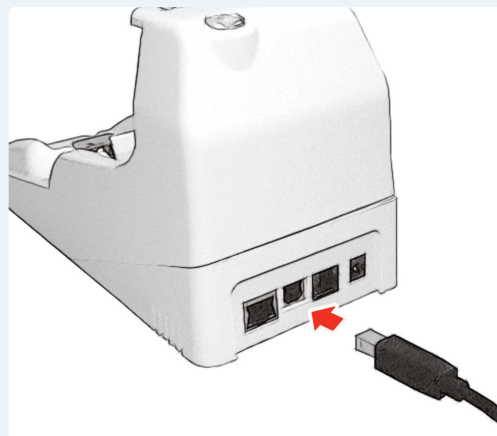
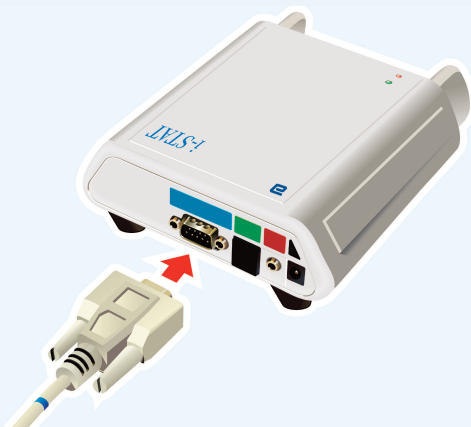
Disposable Batteries

Connecting/Setting Up Equipment

i-STAT 1 JammLite Utility

1.3 If using a Serial Downloader or Serial Downloader/Recharger, connect the i-STAT 1 Serial Downloader to the 9-pin serial port on the back of the computer with the 9-pin null modem serial cable as shown.

If using a DRC-300, connect the DRC-300 to the USB port on the back of the computer with the USB cable as shown. **Note:** These instructions assume that the DRC-300 has already been installed per Art. 728690: "The i-STAT 1 Downloader/Recharger (model number DRC-300)" for serial communications.



1.4

Connect the power supply:

- to the i-STAT 1 Serial Downloader or Serial Downloader/Recharger, and
- to a wall outlet or power strip



When power is supplied to the Serial Downloader, a green light will illuminate.

When power is supplied to the Serial Downloader/Recharger or DRC-300, it will look as it did before power was supplied.

Loading JAMS/CLEW

i-STAT 1 JammLite Utility

1.5

Close all open programs on the computer including i-STAT Central Data Station (if applicable).

1.6

Navigate to <http://www.pointofcare.abbott/int/en/offerings/support/i-stat/istat-system-software-update>.

1.7

Scroll to “Step 2: Download Software Update File”.

No Data Management

Click on “DOWNLOAD **2UXXXXXX.EXE**” and save the file to the Desktop.

Close the “Download Complete” window.


Central Data Station (CDS)


When using a personal computer *without* CDS installed, click on “DOWNLOAD **2UXXXXXX.EXE**” and save the file to the Desktop. Close the “Download Complete” window.

--OR--

When using a personal computer *with* CDS installed, click on “DOWNLOAD **2UXXXXXX.EXE**” and save the file to the c:\bins directory. If a c:\bins directory does not exist, a bins folder must be created under the c: drive.

1.8 Navigate to saved file location. Double click the software file “2UXXXXXX.exe”.

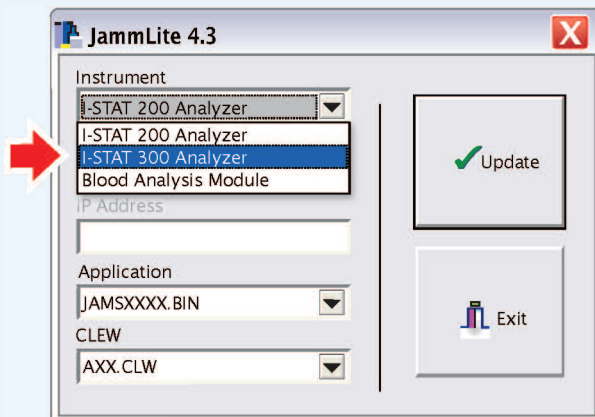
1.9 Click Run. If a Command window opens prompting to overwrite, answer “Y” and then press Enter. Continue answering “Y” to all prompts that appear until the Command window closes. From among the icons that appear, double click  JAMMLITE.EXE

 If the JammLite program does not launch or you receive an error message, contact APOC Technical Support and tell the support specialist you are unable to complete step **1.9** of this document.

Updating Your i-STAT 1 Handheld

i-STAT 1 JammLite Utility

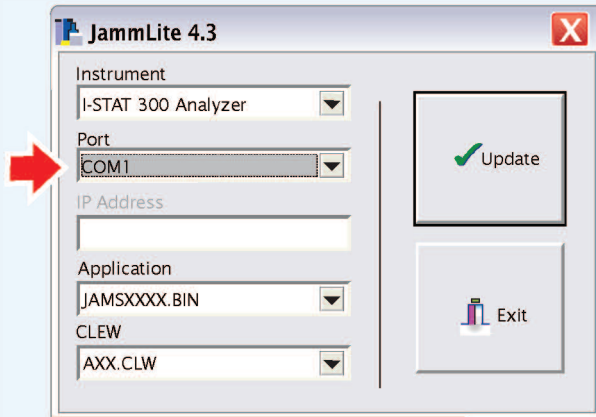
1.10 In the JammLite utility, select the **i-STAT 300 Analyzer** within the Instrument dropdown menu.



1.11

By default, the lowest numbered COM port will automatically be selected.

If the downloader is connected to a different COM port, change the selection to that COM port now.



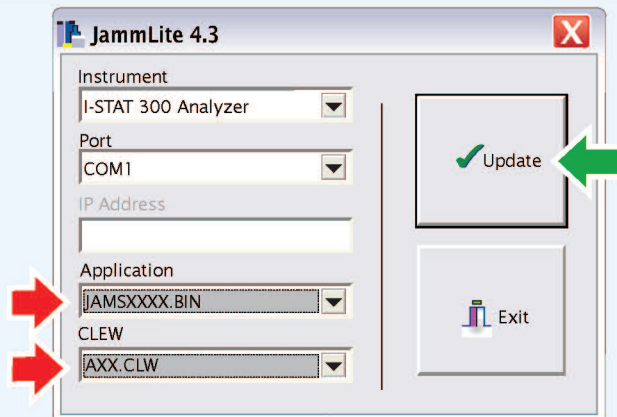
If no ports are displayed, close all open programs including JammLite, and then re-launch JammLite.

If JammLite still has no available COM ports listed, call your Support Services representative for assistance.

1.12

Check that the **Application** and **CLEW** listings match those in the Product Update.

Click the **Update** button.



Note: Application and CLEW numbers are for example only. The “numbers” have been replaced with X’s in the example above and will change with each software update.



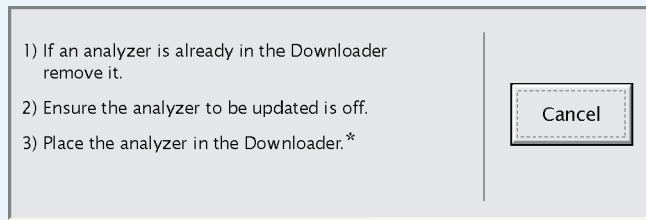
If an error occurs, check the serial connection between the downloader and the PC, as well as the power connection to the downloader.

If connected correctly, select a different COM port (**Do not select TCP/IP**) within the dropdown menu and click **Update**.

If errors persist after trying each of the COM ports listed in JammLite, verify the serial number of your downloader and call your Support Services Representative for assistance.

1.13

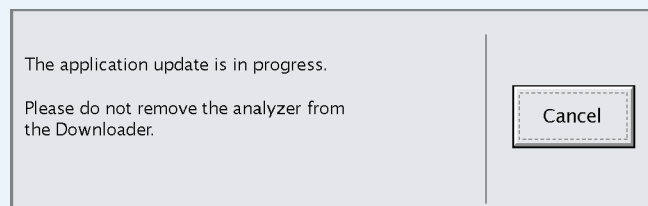
Follow the onscreen instructions.



*If using the Serial Downloader/Recharger, a **blue light** will illuminate when the Handheld is placed correctly within it. If using the Serial Downloader, a **red light** will illuminate when the Handheld is placed correctly within it.

1.14

When the update is in progress, the following screen will appear:

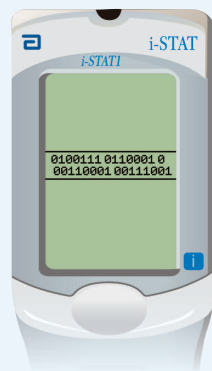


If you do not see the screen shown on the left—

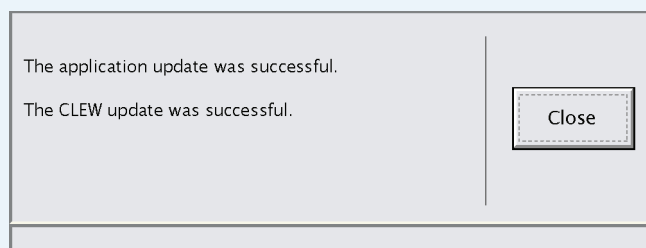
—acknowledge the error message(s) and click **OK**.

Return to Step [1:12](#)

The Receiving Handheld will have 1's and 0's streaming across the screen signifying that it is receiving the software.

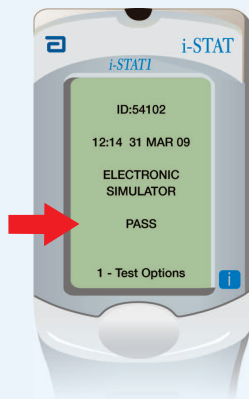


Do not move the Handheld until the success screen is displayed.



1.15

Run the Electronic Simulator in the Handheld.
When the simulator finishes, PASS should be displayed.



! If **PASS** is not displayed, re-run the Electronic Simulator. If the repeated Electronic Simulator attempt fails, please contact your Support Services representative.

! For additional information on running the electronic simulator, please see:

- Section 14 of the i-STAT 1 System Manual, or
- The Introduction and Start-up section of the i-STAT System Manual for Waived Tests

Congratulations. The process for updating the first i-STAT 1 Handheld is complete.

Review the options below for additional instructions.

If there are no additional Handhelds to update, the process is complete:

- Click the **X** button in the upper right corner of the software screen
- Close all other open boxes
- Confirm all messages

If there are additional Handhelds to update via JammLite:

- Click **Close**
- Click **Update**
- Repeat Steps **1.12** through **1.15**

If there are additional handhelds to update with the Handheld-to-Handheld process:

- Go to **2. Update with the Handheld-to-Handheld Process** on page 11

If your facility uses Central Data Station:

- You must proceed to **3. Update Central Data Station Customization Workspace** on page 16.

Update with
JammLite Utility

2. Update with the
Handheld-to-Handheld Process

Update Central Data Station
Customization Workspace

After updating the first i-STAT 1 Handheld, follow these steps to update additional Handhelds with the Handheld-to-Handheld Process

Gathering All Equipment

Handheld-to-Handheld

2.1 Before starting the process make sure all the required equipment is available:

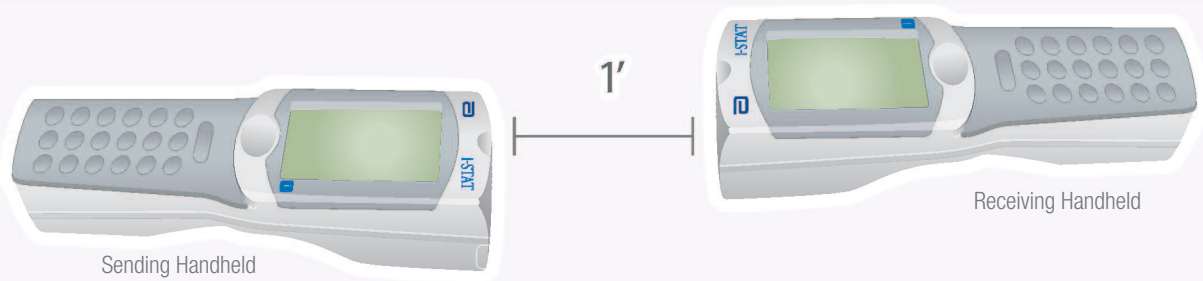
- Recently updated i-STAT 1 Handheld (referred to in this section as the Sending Handheld) charged to 7.5 volts or higher*
- The Handheld unit to be updated (referred to in this section as the Receiving Handheld) charged to 7.5 volts or higher*
- Electronic Simulator



* For information on checking battery power, see page 4, step **1.2**

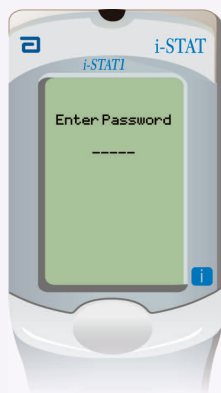
2.2 Make sure the power is **off** on the Receiving Handheld.

2.3 Place Sending and Receiving Handhelds on a flat surface with infrared (IR) windows aligned, approximately 1 foot apart.



2.4 Turn **on** the Sending Handheld, press **MENU**, and select **7-Utility**.

2.5 When prompted for a password, press **ENT** and continue.



Note: Abbott Point of Care Inc. recommends changing the default password.



If the correct password was not entered, the Utility Menu will not appear. Check for data entry errors and retry.

If still unsuccessful, call your Support Services representative and indicate:

- A Handheld-to-Handheld update has been attempted
- Password for Utility Menu is unknown

If that did not work, a password is needed.

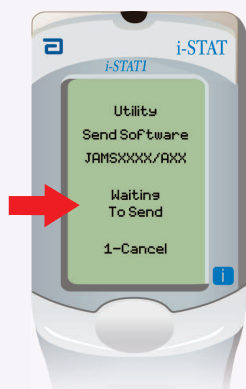
Enter the password defined by your facility and press **ENT**.

2.6 In the Utility Menu:

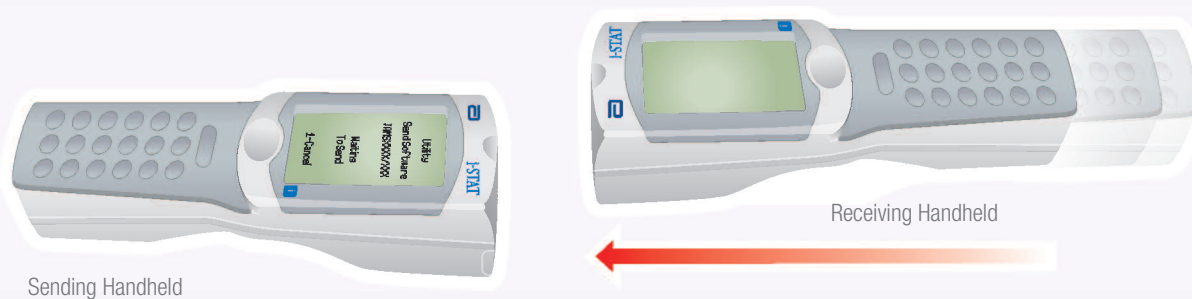
- Press **1-SEND SOFTWARE**
- Press **1-SEND**

Make sure the Receiving Handheld's power is **off**.

2.7 When the Sending Handheld displays **WAITING TO SEND**:

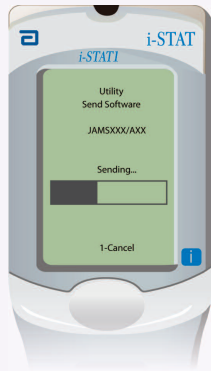


- Keep the infrared windows aligned
- Without lifting either Handheld off the flat surface, move the Receiving Handheld towards the Sending Handheld until the Sending Handheld displays **SENDING**

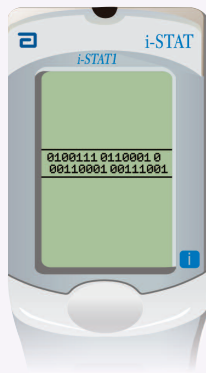


2.8

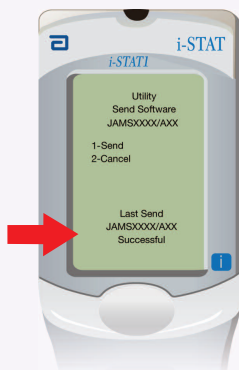
When the update is in progress, the Sending Handheld will display **SENDING** along with a bar indicating that the software is being sent.



The Receiving Handheld will have 1's and 0's streaming across the screen signifying that it is receiving the software.



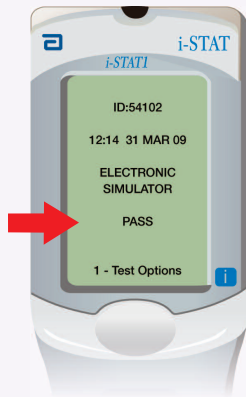
Do not move the Handhelds until the Sending Handheld goes back to the Utility menu, and displays **Last Send Successful**. The update is now complete.



2.9

Run the Electronic Simulator in the newly updated Handheld.

When the simulator finishes, PASS will be displayed.



If **PASS** is not displayed, re-run the Electronic Simulator. If the repeated Electronic Simulator attempt fails, please contact your Support Services representative.



For additional information on running the electronic simulator, please see:

- Section 14 of the i-STAT 1 System Manual, or
- The Introduction and Start-up section of the i-STAT System Manual for Waived Tests

Congratulations. The process for updating an additional i-STAT 1 Handheld is complete.

If there are other i-STAT 1 Handhelds to update, repeat steps **2.2** through **2.9**

If there are no other Handhelds to update, the process is complete.

Update with
JammLite Utility

Update with the
Handheld-to-Handheld Process

3. Update Central Data Station
Customization Workspace

Follow these steps to update the Central Data Station Customization Workspace

Central Data Station is an optional software component used to collect data from i-STAT Handhelds.

Determining CDS Update Path

JAMS/CLEW in Central Data Station

3.1

Before starting the process, choose the appropriate CDS update path:

Are you attempting to update CDS on the PC that was used to update the i-STAT 1 Handhelds with JammLite?

If “Yes,” continue with step **3.2**

If “No,” (CDS is NOT installed on the PC that was used with JammLite) go to page 19.



If you have a version of CDS other than version 5, please contact your Support Services representative.

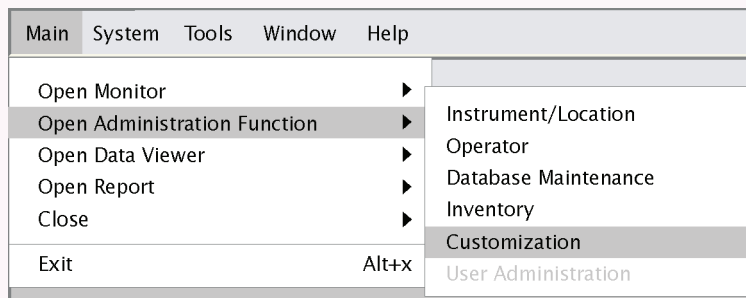
Connecting/Setting Up Equipment

JAMS/CLEW in Central Data Station

3.2

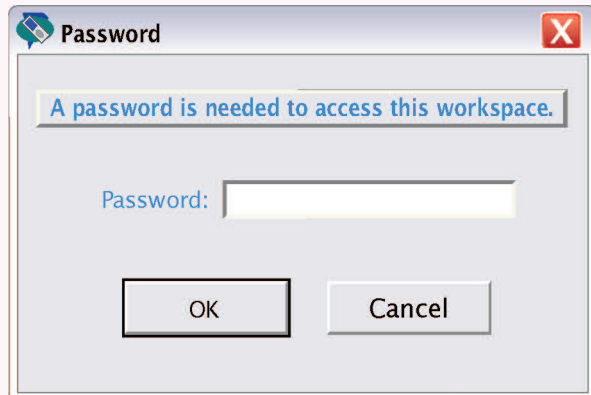
Launch the CDS application and select:


- **Main**
- **Open Administration Function**
- **Customization**



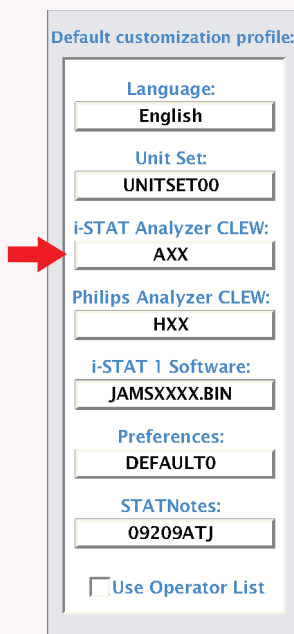
3.3 Type **istat** as the Customization Password and click **OK**.


Note: Abbott Point of Care Inc. recommends changing the default password.



 If you are unable to open CDS Customization, please contact your Support Services representative and indicate that your CDS Customization Password is unknown.

3.4 Under the “Default customization profile:” column, double click on the “**i-STAT Analyzer CLEW:**” button.

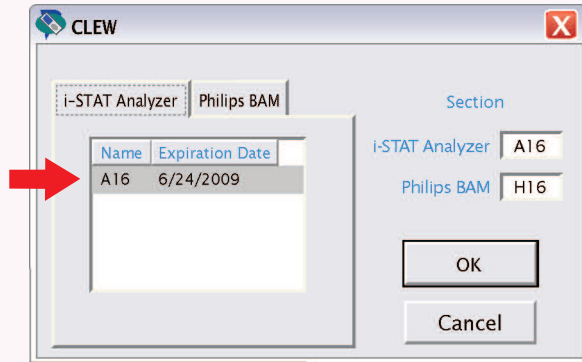


 If the latest CLEW version is not available, attempt to reinstall CLEW by going to pages 5–7 of the JammLite Utility section and complete steps **1.7** through **1.8**

Note: CLEW and JAMS numbers are for example only. These numbers change with each software update.

3.5 The latest CLEW should be displayed in the i-STAT Analyzer CLEW window.

Select the **CLEW** version that matches the Product Update and click **OK**.



Click **YES** for the confirmation message.

3.6 If “Use Default Profile” is not checked beside any location-based customization profile, double click the corresponding box under the i-STAT Analyzer CLEW column.

Location-based customization profiles:							
Location	Enable Updates	Use Default Profile	Update CLEW	i-STAT Analyzer CLEW	Philips BAM CLEW	Preferences	STATNotes
A_1	<input checked="" type="checkbox"/>	<input type="checkbox"/>	<input checked="" type="checkbox"/>	A16	H16	DEFAULT0	CHART0

The latest CLEW should be displayed in the i-STAT Analyzer CLEW window.

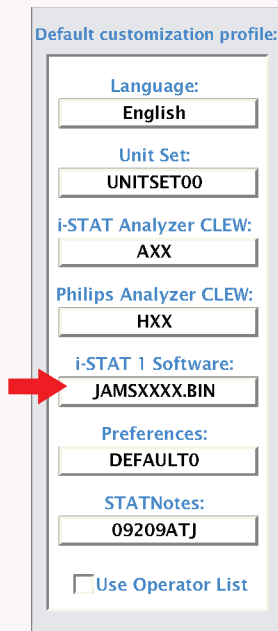
Select the **CLEW** version that matches the Product Update and click **OK**.

Click **YES** for the confirmation message.

3.7

Underneath the “Default customization profile:” column:

- Double click on the “**i-STAT 1 Software:**” button
- Select the JAMS version that matches the Product Update
- Click **OK**



Default customization profile:

Language: English

Unit Set: UNITSET00

i-STAT Analyzer CLEW: AXX

Philips Analyzer CLEW: HXX

i-STAT 1 Software: JAMSXXX.BIN

Preferences: DEFAULT0

STATNotes: 09209ATJ

Use Operator List

Congratulations. You have successfully assigned JAMS/CLEW in your Central Data Station.

CDS is not installed on the PC used with JammLite

If CDS is not installed on the PC that was used with the JammLite Utility:

- Go to the PC where CDS is installed
- Go to pages 5–7 of the JammLite Utility section and complete steps **1.6** through **1.8**
- When complete, proceed to the CDS Customization section pages (16–19) and complete steps **3.2** through **3.7**

i-STAT® and PrecisionWeb® are trademarks of the Abbott Group of Companies in various jurisdictions.

Windows is a trademark of Microsoft Corporation.

RALS-Plus® is a trademark of Medical Automation Systems, Inc.