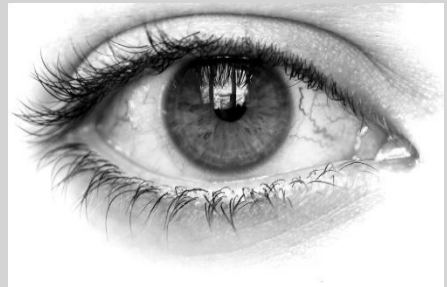


Eye Unit

Glaucoma Tube Surgery



Glaucoma tube surgery can lower eye pressure to stop your vision getting worse from glaucoma. It is used when drops or other operations have not worked or are unlikely to. This is a new treatment at our hospital, and so our current experience is limited.


What it involves

Your surgeon will insert a little tube into the front of your eye, allowing fluid to drain out around a plate. This can lower eye pressure, stopping glaucoma nerve damage. You will not see or feel the tube, plate or the fluid.

Benefits & Risks

Your surgeon has recommended this operation because without it, your glaucoma is likely to get worse and you could lose your sight completely. The operation works in most people. However, serious and common risks include:

- **Bleeding:** everyone has some eye redness and bruising after the operation. Serious bleeding is extremely rare, but can result in blindness
- **Infection:** serious infection is very rare but can result in blindness.
- **Low pressure:** this can blur the vision and makes serious bleeding in the eye more likely. More surgery may be needed to treat this.
- **Further surgery:** sometimes surgery is needed to make the surgery work better, treat complications, or because the operation has not worked.

- 
-
- Reduced vision: your vision will be more blurry after the surgery, but this should improve as the eye settles. Sometimes it will not be quite as good as before. There is a small risk of double vision. Blindness is extremely rare.

The operation and after

- The surgery can be done with you put to sleep or awake. You can usually go home on the day of the surgery.
- You will need to be seen the day after the surgery. Your surgeon will then decide on when to see you again, which is usually a few weeks later.
- It will be a month or two before the operation starts to work. Carry on with your glaucoma drops after the surgery.
- Be careful to avoid heavy lifting, bending forwards, or strenuous activity after the operation. Your nurse will give you advice on how to care for your eye.

Symptoms to watch out for

Your eye will be sore, gritty, a bit sticky and blurry after the surgery. This is normal. However, symptoms to watch out for are:

- Bad or worsening pain
- A very sticky eye despite cleaning
- Sudden or gradual worsening vision, shadows or floaters in vision
- Flashing lights in your vision
- Increasing redness

If you have any of the above symptoms then contact us immediately

Ophthalmology Department

1st Floor Central B28 & B29
Royal United Hospital Bath NHS Foundation Trust
Combe Park
Bath
BA1 3NG

If you have any further questions, please call:

**Monday – Friday 9am -5pm
Eye Clinic (01225) 826989**

**If you have an emergency on evenings, bank holidays and weekends:
Call the RUH switchboard (01225) 428331 and ask for the on call eye doctor.**

Royal United Hospitals Bath NHS Foundation Trust
Combe Park, Bath, BA1 3NG

01225 428331 | www.ruh.nhs.uk

If you would like this leaflet in email form, large print, braille or another language, please contact the Patient Support and Complaints team on 01225 825656.

Date of publication: February 2025 | Ref: RUH OPT/025
© Royal United Hospitals Bath NHS Foundation Trust