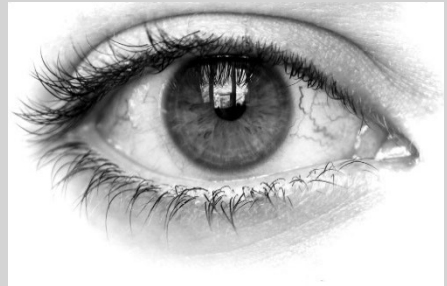


Eye Unit

Pterygium



What is a pterygium?

A pterygium is a raised, triangular or wedge-shaped, benign growth of conjunctival tissue. The conjunctiva is the membrane that covers the white of your eye. It usually occurs on the side of your eye nearest your nose.

A pterygium can grow over the cornea (the transparent dome at the front of your eyeball) in a triangular fashion.

It may grow large enough to affect your vision (eyesight).

What causes it?

A pterygium usually develops if you have been living in a hot, dry climate. This may be a response to;

- your eye's long-term exposure to sunlight,
- chronic eye irritation from a dry climate.
-

If it is not possible to relieve symptoms with lubricating drops, then an operation to remove it can be carried out under general anaesthetic.

What will happen before my operation?

You will receive an appointment for a pre-operative assessment in the eye unit to have an assessment about your medical history, medications and allergies etc and you will be given information relating to your anaesthetic and admission.



What happens after the operation?

- The eye will be red and swollen over the surgical area for several weeks, settling over about 3 months.
- Drops will be prescribed for you after the operation. Please use as prescribed.
- As the anaesthetic starts to wear off, it is quite common for the eye to be quite uncomfortable. This may require painkillers such as paracetamol.

As you will be having a general anaesthetic, we advise you to:

- Arrange to be collected from the eye ward by car with a responsible adult
- Not be left alone for 24 hours
- Arrange for the care of dependants (children and/or elderly relatives)
- Depending on your job, plan to have time off work. You will be advised on this before you leave the hospital.

We advise you not to:

- Drive a car, ride a bike or scooter for 48 hours
- Operate heavy machinery for 48 hours
- Drink alcohol or take sedative drugs for 48 hours
- Make important decisions.

If you have any discharge, pain or recurrent bleeding, contact the eye department on the following numbers:

Ophthalmology Department

1st Floor Central B28 & B29
Royal United Hospital Bath NHS Foundation Trust
Combe Park
Bath
BA1 3NG

If you have any further questions please call:

**Monday – Friday 9am -5pm
Eye Clinic (01225) 826989**

**If you have an emergency on evenings, bank holidays and weekends:
Call the RUH switchboard (01225) 428331 and ask for the on call eye doctor.**

Royal United Hospitals Bath NHS Foundation Trust
Combe Park, Bath, BA1 3NG

01225 428331 | www.ruh.nhs.uk

If you would like this leaflet in email form, large print, braille or another language, please contact the Patient Support and Complaints team on 01225 825656.

Date of publication: February 2025 | Ref: RUH OPT/027
© Royal United Hospitals Bath NHS Foundation Trust

The RUH, where you matter