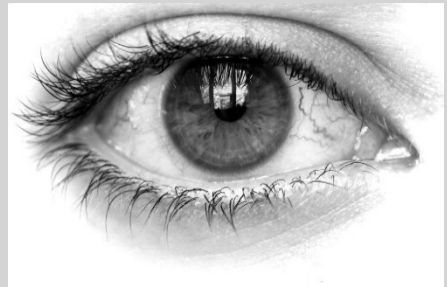


Eye Unit

DMEK/DSAEK Post-procedure information Cornea Transplant Surgery



About the surgery...

DMEK – Descemet Membrane Endothelial Keratoplasty (Partial thickness graft)

DSAEK - Descemet's Stripping Automated Endothelial Keratoplasty (Partial thickness corneal graft)


These are both types of Cornea Transplant Surgery

The surgery is usually carried out under local anaesthetic. It is important to bring a dressing gown and slippers. Pack an overnight bag in the unlikely event that you will need to stay overnight.

Prior to the surgery, you will receive a separate appointment for laser treatment, your Surgeon will discuss this with you beforehand.

What to expect post-surgery...

- You will need to lie flat on your back for 2 hours after surgery.
- The surgeon will then check the pressures in your eye. If this is okay then you may go home. In the unlikely event that the pressures in your eye are high, you may need to stay in hospital overnight.
- You will need to lie strictly flat on your back for 50 minutes of every hour, a 10 minute rest period is allowed. This is to minimise the risk of graft detachment. You will need to continue this for around 1 week.
- You will have eye drops post-operatively and steroid drops that will continue for life. Your Surgeon will discuss the dose and frequency with before you leave. These are important to minimise the risk of graft rejection.
- Your eye may ache and be watery. Please take over the counter pain relief if needed.

- 
-
- You can shower/wash as normal but avoid getting soap or shampoo in your eyes.

Review post-surgery...

You will be seen by an Ophthalmologist the following day (an appointment will be given to you before you leave).

You will then be seen in clinic 1-2 weeks post-surgery to assess your graft.

What to avoid...

- Do not rub your eye
- Do not go swimming for 4 weeks
- Do not lift any heavy objects
- Avoid strenuous activity for 2 weeks
- Avoid dusty/dirty areas
- Avoid flying until you have had your post op review – if this will be a problem – please let your consultant know
- Do not drive until you have been told you are safe to do so and meet DVLA guidelines
- You will need to have 2 weeks off work

Please contact us immediately if you have any of the following symptoms...

- Red Eye
- Sensitivity to light
- Vision loss
- Pain

If you experience any of these symptoms, please use the emergency contact letters on the back of this leaflet.

Ophthalmology Department

1st Floor Central B28 & B29
Royal United Hospital Bath NHS Foundation Trust
Combe Park
Bath
BA1 3NG

If you have any further questions please call:

**Monday – Friday 9am -5pm
Eye Clinic (01225) 826989**

If you have an emergency on evenings, bank holidays and weekends:

Call the RUH switchboard (01225) 428331 and ask for the on call eye doctor.

Royal United Hospitals Bath NHS Foundation Trust
Combe Park, Bath, BA1 3NG

01225 428331 | www.ruh.nhs.uk

If you would like this leaflet in email form, large print, braille or another language, please contact the Patient Support and Complaints team on 01225 825656.

Date of publication: February 2025 | Ref: RUH OPT/029
© Royal United Hospitals Bath NHS Foundation Trust

The RUH, where you matter